

# Primus Mobile Network Coverage – Brisbane



As at November 2008

- 3G Voice, Data and Video On Street Coverage\*
- On Street Voice, GPRS and SMS Coverage\*
- Car Kit with External Antenna Voice, GPRS and SMS Coverage\*

## 3G / GSM Network Coverage

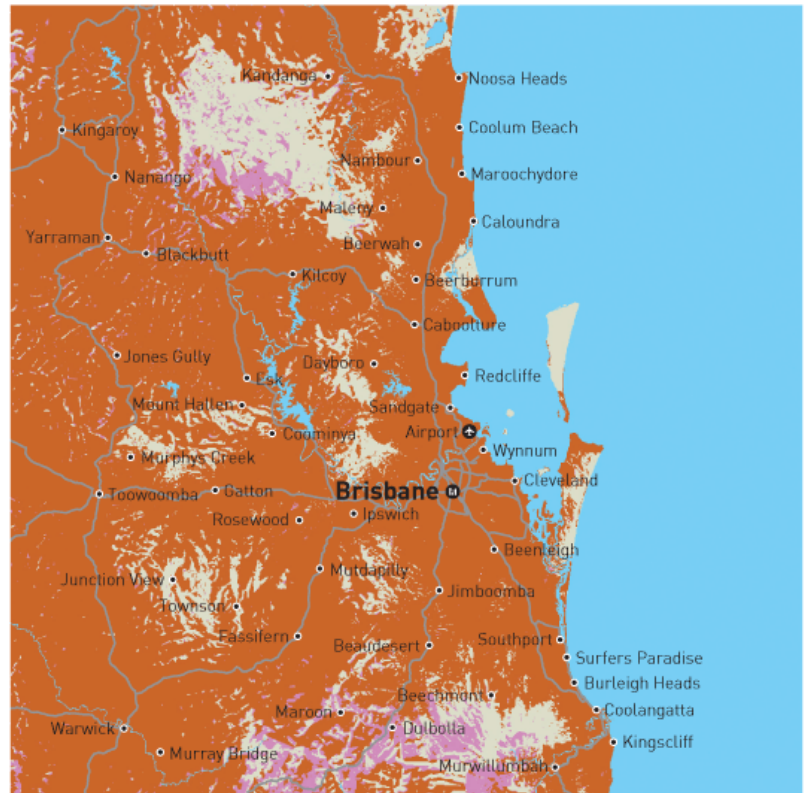
You will require a UMTS 2100MHz compatible device to access the 3G network.

Outside the 3G area, you will require a device capable of accessing GSM 900MHz. When within a 3G network area, your call or data session may also access the GSM/GPRS network if your handset supports GSM/GPRS 900Mhz

## 'Yes' G Network Coverage

You will require a YesG 2100/900Mhz compatible device to access the YesG Network.

When within a YesG network area, your call or data session may also access the GSM/GPRS network if your handset supports GSM/GPRS 900Mhz.



As at December 2008

- Yes G Voice, Data and Video On Street Coverage\*
- Future YesG Voice, Data and Video On Street Coverage\*

Mobile coverage maps are prepared using the latest available data, tools and techniques to map Optus Mobile Network as accurately as possible.

However as with any network based on radio technology, handset quality or local conditions may prevent or interfere with mobile reception within coverage areas - e.g., inside concrete buildings, lift wells, basements, tunnels and road cuttings. High rise buildings may also suffer degradation of service and these maps are not an indication of in-building coverage.

Our coverage maps may show planned roll out. These predictions are based on rollout schedules available at the time of publication and they may be subject to change without notice should circumstances require.